

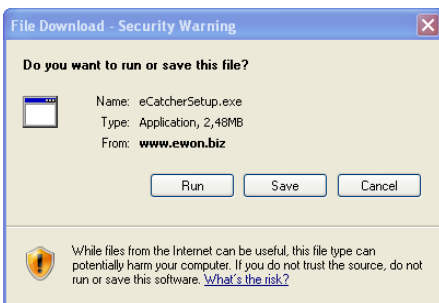
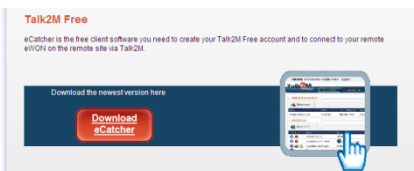
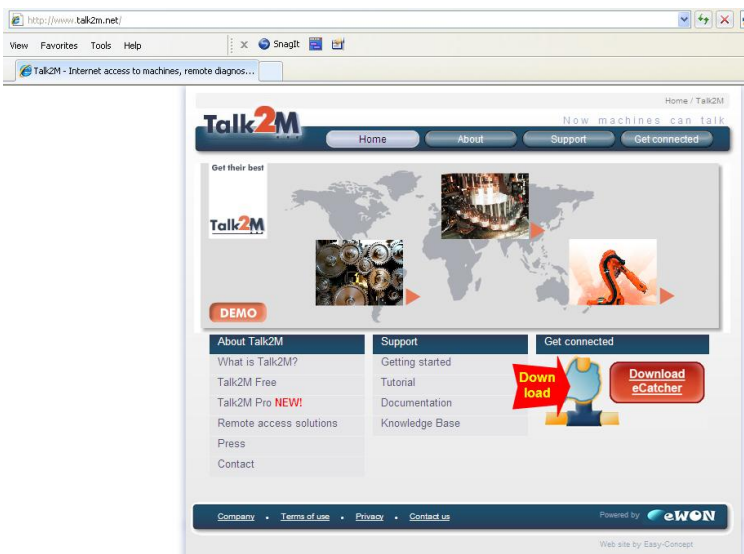
# INS-SCANDINAVIA

INDUSTRIAL NETWORK SOLUTIONS SCANDINAVIA

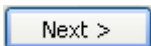
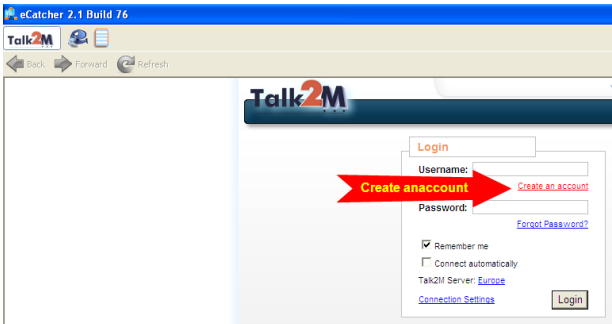
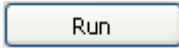
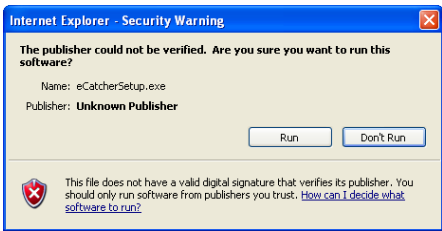


How to setup Talk2M and a eWON 2xxx CD or 4xxxCD.


[www.talk2m.net](http://www.talk2m.net)



Run



**Create Talk2M Account**

**Additional information** 

E-mail:   
Important notifications will be sent to this address only.

Company:

Country:


Talk2M Server:  Europe (Main Server)  North America

Customers in the US, Canada and Mexico should connect to the North America Talk2M Server.  
 All others should use the European server.  
 IMPORTANT: All your eWONs must connect to the same server.

< Back   Next >   Cancel

Next >   Login

**Connecting Talk2M**

 Connecting...


Cancel

Welcome: INS Scandinavia - INS Scandinavia   [Log out](#)

**Talk2M**   You select, We connect


My eWONs   My Account   History   ? Help

**Active Connection**

 Disconnect

You are not connected to any station.

**eWON List**

 New eWON...

**Add eWON**

Actions	Name	Status	Description
Click the 'New eWON' button to add eWONs to this list.			

New eWON

Save

Cancel

eWON Description

eWON Name: eWON Test 2010

Description: Test room 3, m4

Serial Number: 0922-x007-56



Activation Key:

Connection Type: LAN/ADSL

Remote Network

Remote subnet accessible on the eWON LAN side (if any).

eWON LAN IP: 100.100.1.1



Network Mask: 255.255.255.0

Save

Copy Talk2M Activation key.

eWON Setup: eWON Test 2010

Back

Advanced

Select your preferred method to configure your eWON:

Configure via SMS

Send an SMS to the eWON with its activation key. It will trigger the remote auto-configuration.



Configure via Activation Key

Use the eWON's configuration wizard and enter this activation key.



Activation Key: FA630C8AAC42A512263DE472C1EEC88 [copy](#)

Configure via eWON Name

Use the eWON's configuration wizard and enter your Talk2M login + the eWON name.



eWON Name: eWON Test 2010 [copy](#)

Welcome: INS Scandinavia - INS Scandinavia [Log out](#)

**Talk2M** You select, We connect

My eWONS My Account History Help

**Active Connection**

Disconnect

You are not connected to any station.

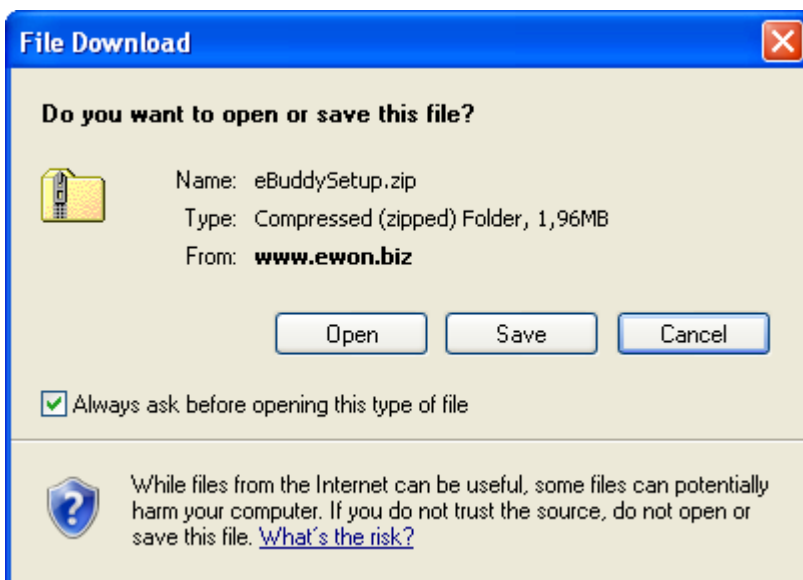
**eWON List**

New eWON...

Actions	Name	Status	Description
	eWON Test 2010	Offline	Test room 3, m4

Setup the eWON.

Go to [www.ewon.biz](http://www.ewon.biz) – support – Download – Download eBuddy.



**File Download - Security Warning**

**The publisher could not be verified. Are you sure you want to run this software?**


 Name: eBuddySetup.exe  
Publisher: **Unknown Publisher**  
Type: Application

---

 This file does not have a valid digital signature that verifies its publisher. You should only run software from publishers you trust. [How can I decide what software to run?](#)

**eBuddy 1.7 (44)**


**Start Installation**



You are now ready to install eBuddy 1.7 (44).  
Click the Next button to begin the installation or the Back button to reenter the installation information.

**eBuddy 1.7 (44)**

**Destination Location**

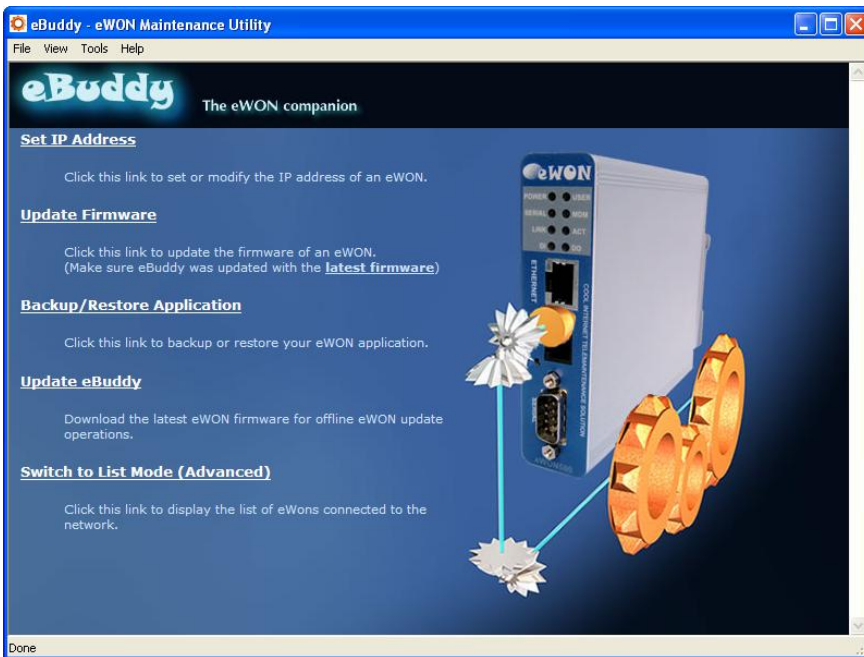
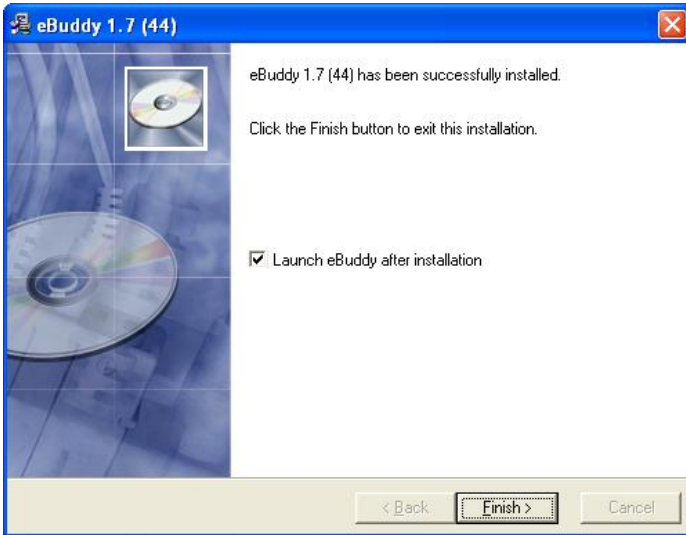
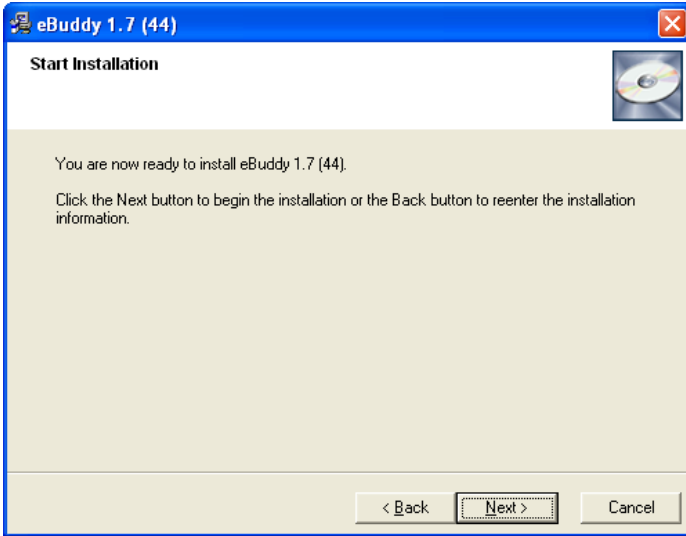


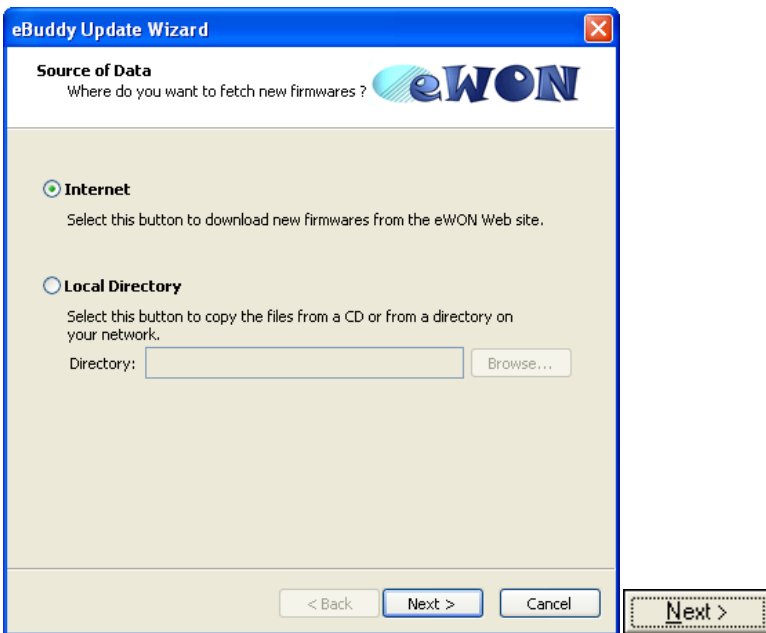
Setup will install eBuddy 1.7 (44) in the following folder.  
To install into a different folder, click Browse, and select another folder.

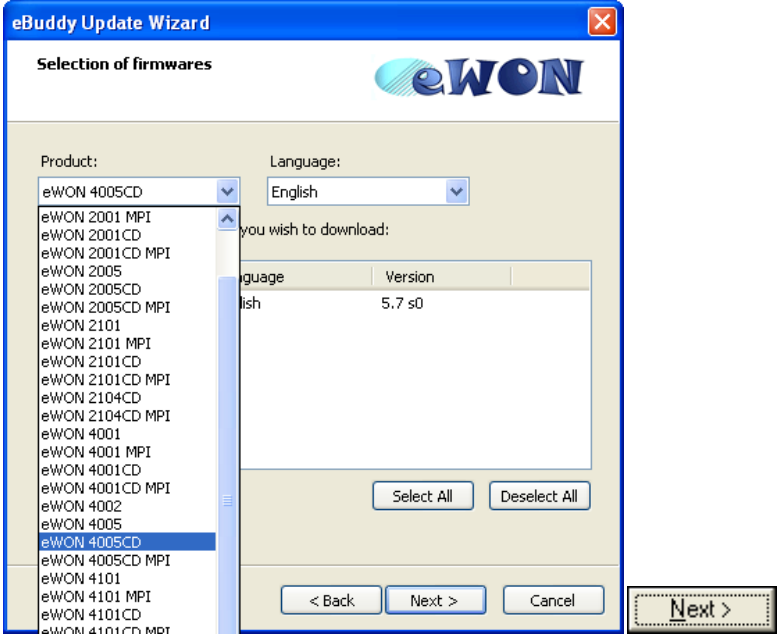
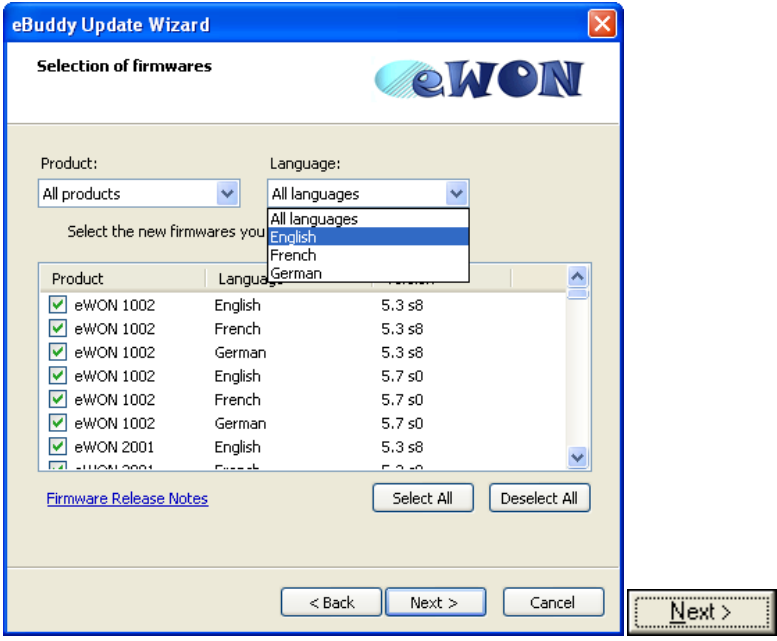
Destination Folder: C:\Program Files\eBuddy

Install this application for:

- Anyone who uses this computer (You must have administration rights)
- Only for me (Administrator)








**eBuddy Update Wizard**

**Selection of firmwares**



Product:  Language:


Select the new firmwares you wish to download:

Product	Language	Version
<input checked="" type="checkbox"/> eWON 4005CD	English	5.7 s0

[Firmware Release Notes](#)

**eBuddy Update Wizard**

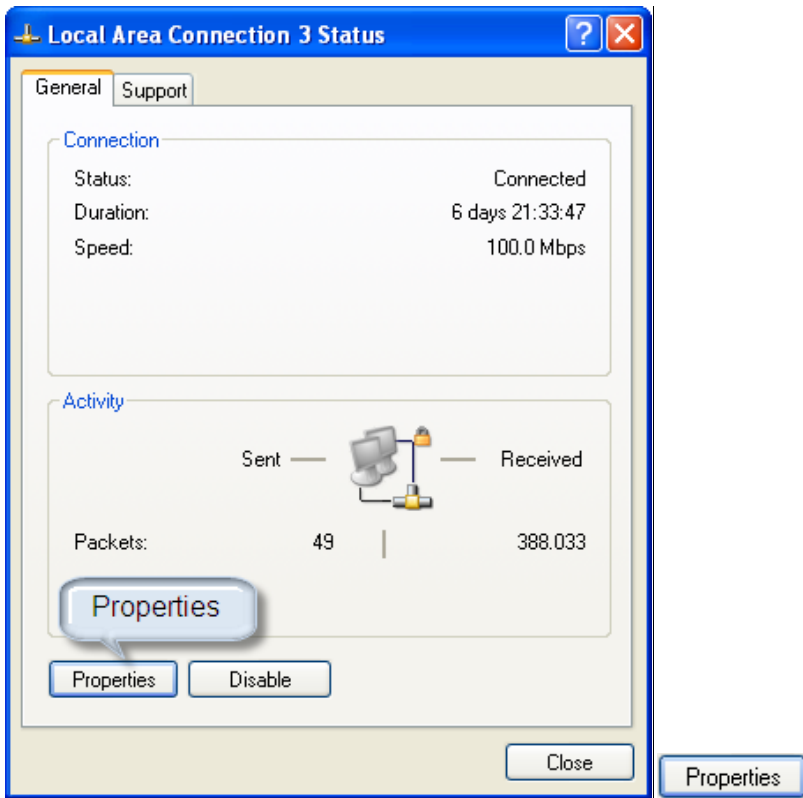
**Download of firmware files**

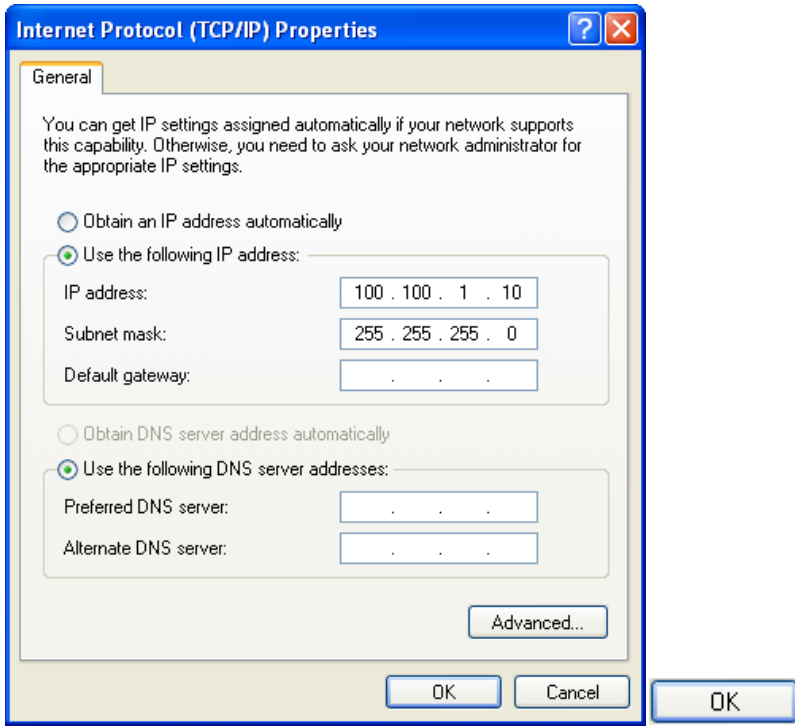
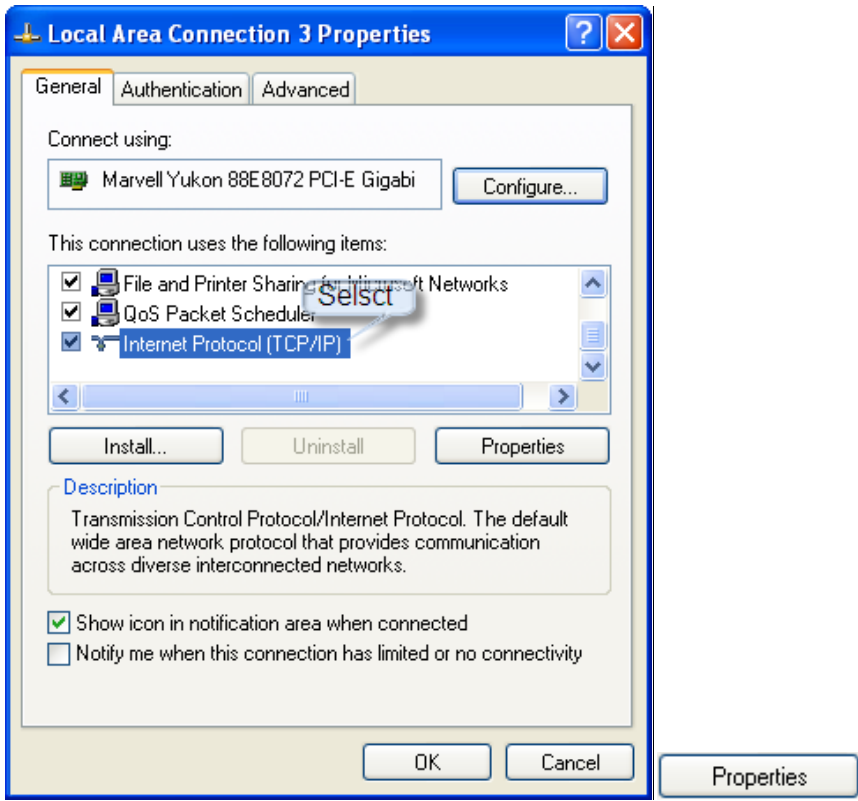


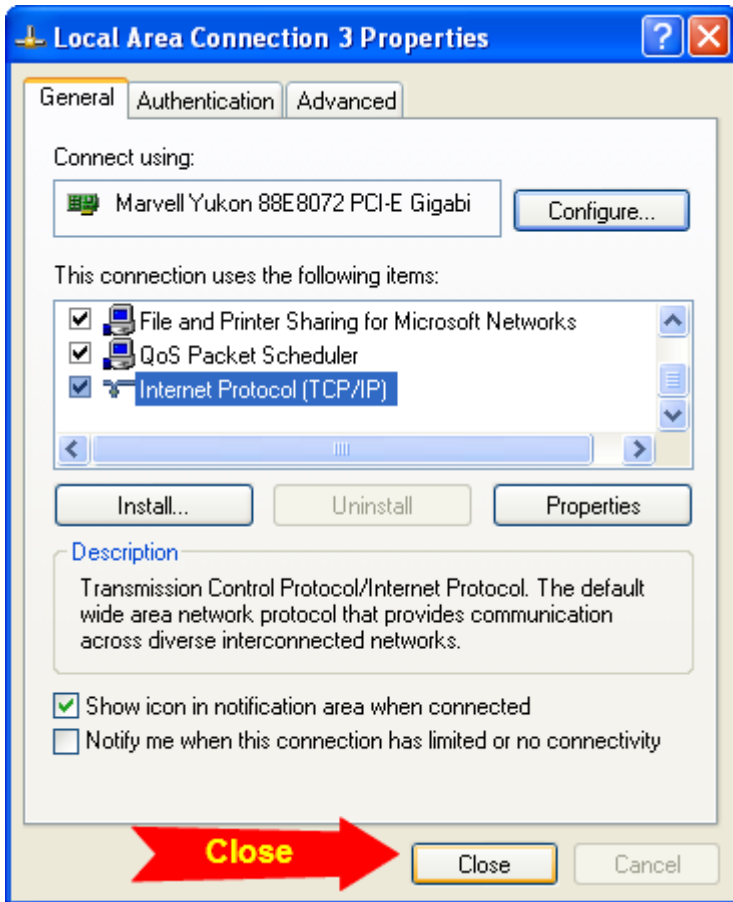
Firmware files successfully downloaded.

Connect your ethernet port on your PC to eWON LAN.

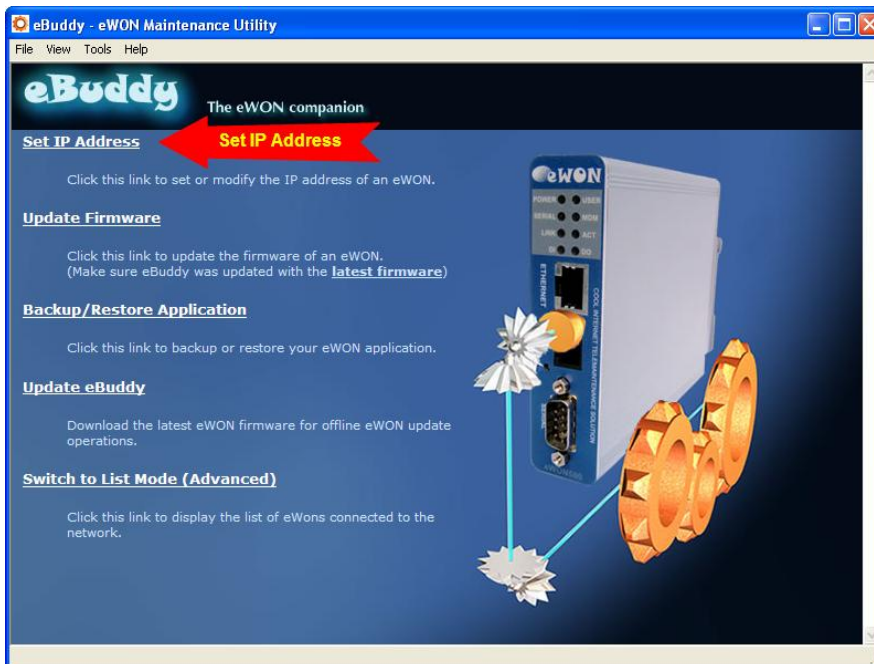
Setup your IP address on your PC.








Set up eWON IP address.




**IP Address Wizard** ✕

**Welcome to the IP Address Wizard**  
Which eWON would you like to configure? 

Serial Number:

**IP Address Wizard** ✕

**IP Address**  
Here you can specify the new IP settings 

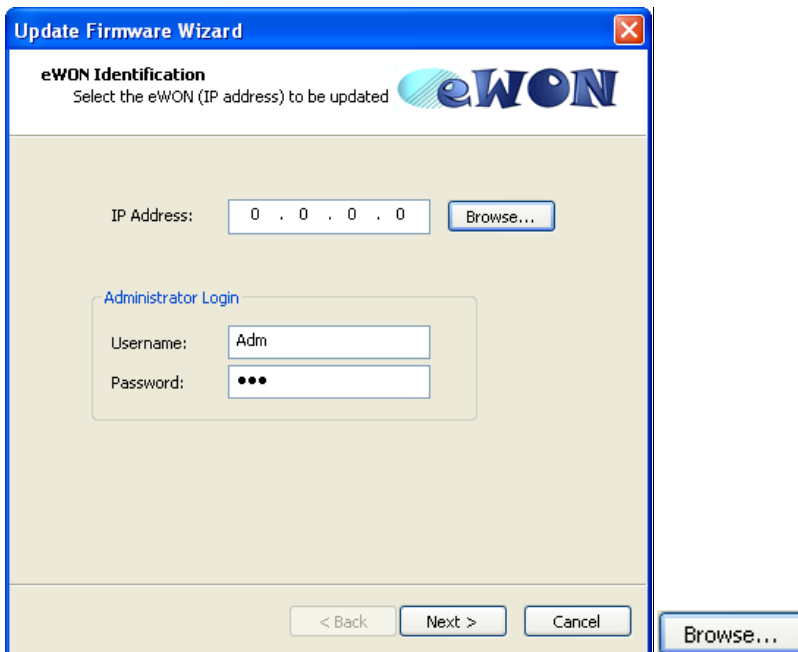
Serial Number: 0922-0007-56

IP Address:

Subnet Mask:



Update firmware.



Select an eWON

Serial Number	Device Type	IP Address
0922-0007-56	eWON 4005CD	100.100.1.1

OK  
Cancel  
Refresh

Select an eWON

Serial Number	Device Type	IP Address
0922-0007-56	eWON 4005CD	100.100.1.1

OK  
Cancel  
Refresh

OK

Update Firmware Wizard

**eWON Identification**  
Select the eWON (IP address) to be updated 

IP Address:

Administrator Login

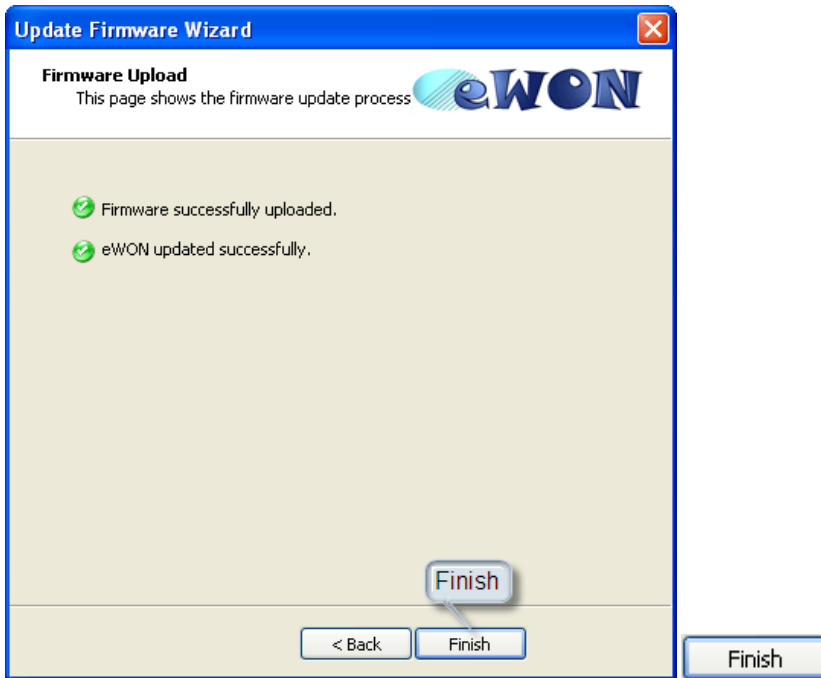
Username:

Password:

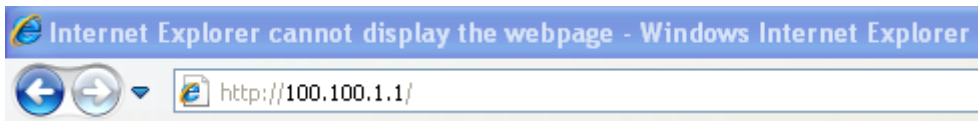
< Back

Next >

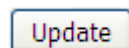
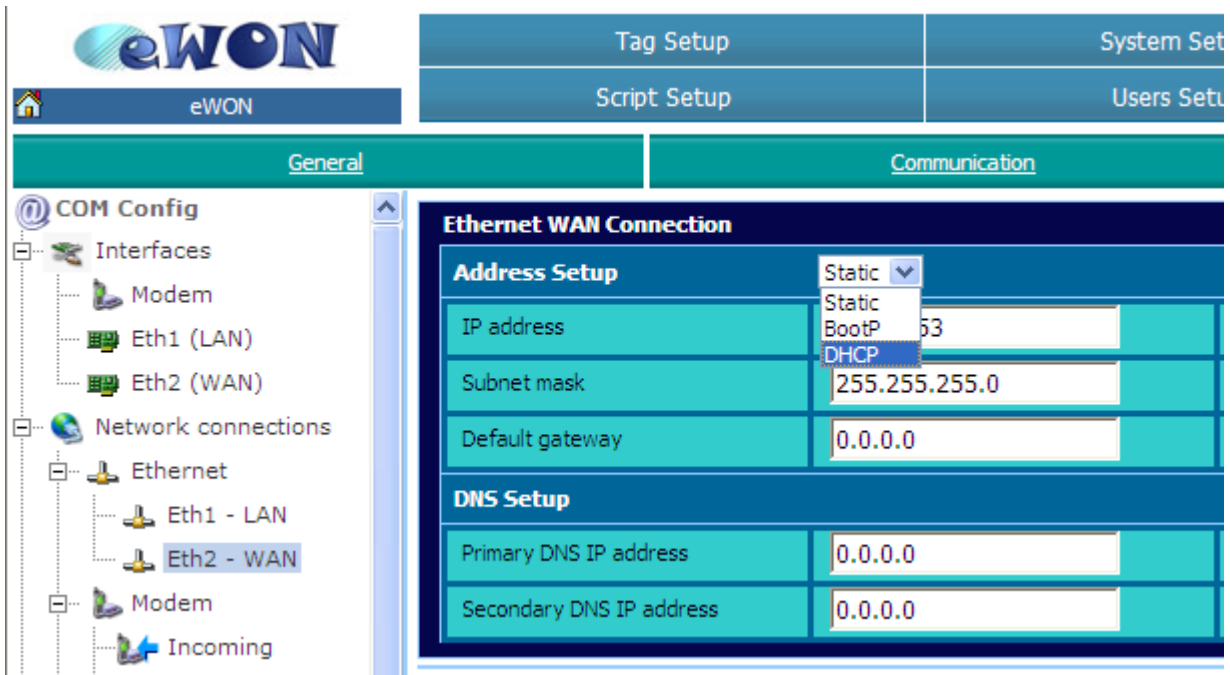
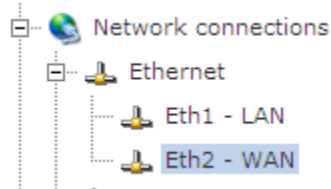
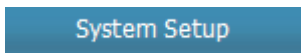
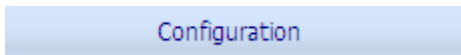
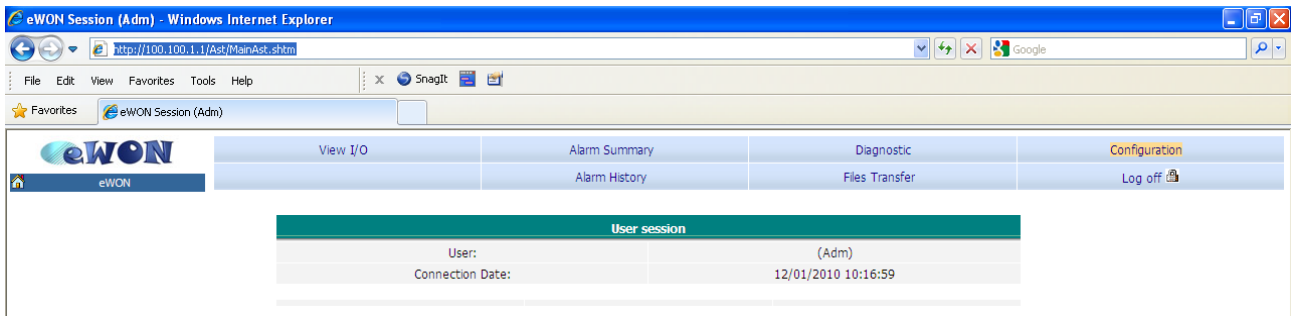




Access your eWON.



Configure your eWON for Talk2M.





Tag Setup	System Setup
Script Setup	Users Setup

eWON

General	Communication	Storage
---------	---------------	---------

**COM Config**

- Interfaces
  - Modem
  - Eth1 (LAN)
  - Eth2 (WAN)
- Network connections
  - Ethernet
    - Eth1 - LAN
    - Eth2 - WAN
  - Modem
    - Incoming
    - Outgoing
      - Global
      - Server1
      - Server2
  - VPN

**Ethernet WAN Connection**

**Address Setup** DHCP

IP address	10.1.0.53
Subnet mask	255.255.255.0
Default gateway	0.0.0.0

**DNS Setup**  Via DHCP

Primary DNS IP address	0.0.0.0	Leave blank (or 0.0.0.0) if no DNS
Secondary DNS IP address	0.0.0.0	

**DHCP Config**

Network name		Ex: myewon or myewon.example.co
--------------	--	---------------------------------

Update

Update



Tag Setup	System Setup	IO Server Config
Script Setup	Users Setup	Pages List

eWON

General	Communication	Storage
---------	---------------	---------

**COM Config**

- Interfaces
  - Modem
  - Eth1 (LAN)
  - Eth2 (WAN)
- Network connections
  - Ethernet
    - Eth1 - LAN
    - Eth2 - WAN
  - Modem
    - Incoming
    - Outgoing
      - Global
      - Server1
      - Server2
  - VPN
- Networking Config
  - Internet Connection
  - VPN Connection
  - Publish IP Address

**Internet connection setup**

**Internet access**

Network connection	Ethernet WAN connection
Maintain connection	<input checked="" type="checkbox"/>

**Publish WAN IP address**

Publish IP address	Disabled	Configure pu
Re-publish interval	0 minutes	0 for publica

**"On demand" Internet connection**

Accept dial on demand from **NO ONE EXCEPT** from:  
 Accept dial on demand from **ANYONE EXCEPT** from:

IP Range	From: 0.0.0.0	To: 0.0.0.0
IP Range	From: 0.0.0.0	To: 0.0.0.0
IP Range	From: 0.0.0.0	To: 0.0.0.0
IP Range	From: 0.0.0.0	To: 0.0.0.0

Update

Update

eWON Session (Adm) - Windows Internet Explorer

http://100.100.1.1/Asst/MainAsst.shtm

File Edit View Favorites Tools Help

Tag Setup System Setup IO Server Config Main Menu

Script Setup Users Setup Pages List **Wizard**

User session	
User:	(Adm)
Connection Date:	12/01/2010 10:16:59



## eWON configuration wizard

What do you want to configure?



### Configure INTERNET Connection

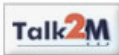
Use this wizard to configure how the eWON will connect to the Internet.



### Test INTERNET Connection

Use this wizard to test the eWON internet connection.

Select



### Configure Talk2M connectivity

Use this option to configure this eWON to connect to talk2m.com  
The eWON must first be defined in Talk2M.



### Configure "Endian For eWON" connectivity

Use this option to configure this eWON to connect to your Endian4eWON VPN server  
The eWON must first be defined in your VPN server.



### Configure mdex connectivity

Use this option to configure this eWON to connect to mdex.



## eWON configuration wizard / Talk2M / Service config

Configure the Talk2M service you want to use.



Talk2M Free  Talk2M Pro


You created your account on Talk2M Free US:  
When you first create your Talk2M Free account,  
you must select the account location.  
Accounts created before June 2009 are NOT in  
USA




<< Previous


Next >>

Next >>

 eWON configuration wizard / Talk2M

Select your preferred method for registering the eWON on [Talk2M.com](http://Talk2M.com)?


 **Register with eWON NAME**  
Use the eWON Talk2m name and your Talk2m login and password.  
The eWON must first be defined in Talk2M.

 **Register with ACTIVATION KEY**  
Use the eWON 'Activation Key' provided by talk2M.com.  
The eWON must first be defined in Talk2M.


**Important:** Your eWON must have a working Internet Connection  
Before using the wizard, the eWON Internet access must be correctly configured.


<< Previous      Next >>

Paste Talk2M Activation key.

 eWON configuration wizard / Talk2M

Select your preferred method for registering the eWON on [Talk2M.com](http://Talk2M.com)?

 **Register with eWON NAME**  
Use the eWON Talk2m name and your Talk2m login and password.  
The eWON must first be defined in Talk2M.

 **Register with ACTIVATION KEY**  
Use the eWON 'Activation Key' provided by talk2M.com.  
The eWON must first be defined in Talk2M.

Activation Key:

**Important:** Your eWON must have a working internet Connection  
Before using the wizard, the eWON Internet access must be correctly configured.

<< Previous      Next >>

Next >>



## eWON configuration wizard / Talk2M / Connection config

If you need to connect through an HTTP Proxy server fill the form below, otherwise click next..

### HTTP proxy configuration

Proxy server IP address (not name):

Proxy server port:

User Name:

User Password:

<< Previous

Next >>

**Next**



## eWON configuration wizard / Talk2M / Connection test & configuration

Current operation



Finished

47

Results

- ✓ WAN connection
- ✓ UDP connection
- ✓ HTTP direct connection
- 🔇 HTTP Proxy connection      Operation skipped
- ✓ Read Talk2M config
- ✓ Test VPN connection

Diagnosis



VPN connection will use UDP mode  
SUCCESS: VPN connection configured and tested

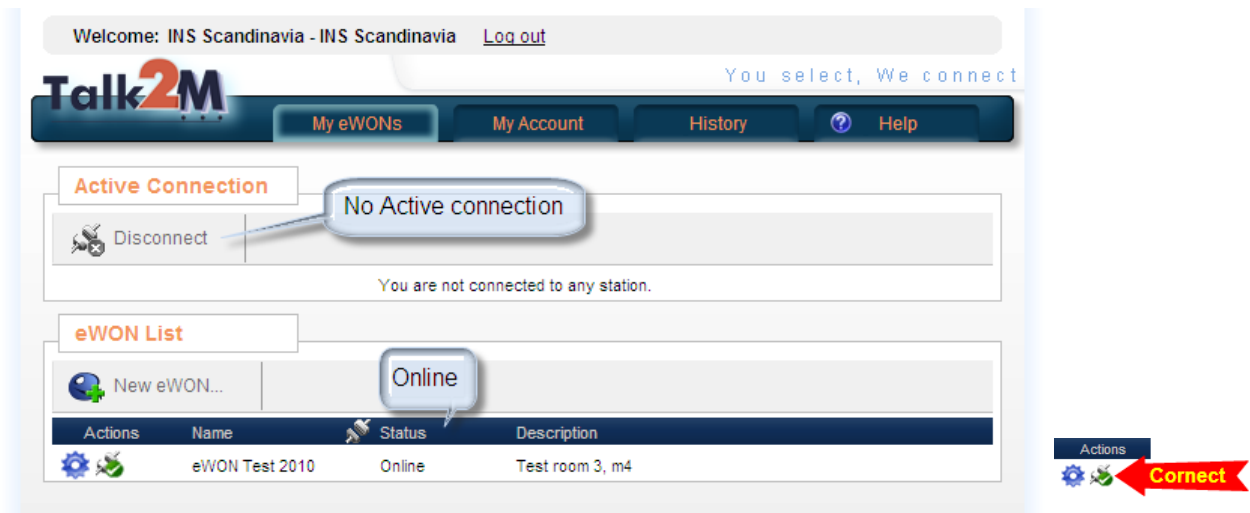
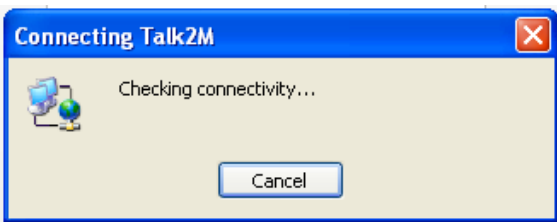
<< Previous

Done

Done

Go online.

Connect your PC to the internet.



Welcome: INS Scandinavia - INS Scandinavia [Log out](#)

**Talk2M** You select, We connect

My eWONs My Account History Help

**Active Connection**

Disconnect

Connected to: [eWON Test 2010](#) (Test room 3, m4)

IP & Remote Network: 10.8.29.207 - 100.100.1.1/24

**eWON List**

New eWON...

Actions	Name	Status	Description
	<a href="#">eWON Test 2010</a>	Connected (10.8.29.207)	Test room 3, m4

You can now connect to remote devices on the LAN site.

Index Page - Windows Internet Explorer

http://100.100.1.20/

Allen-Bradley Milwaukee, WI

Expand Minimize

- Home
- Login
- Basic Configuration
- Network Services Setup
- Diagnostics
- Switch Configuration

Device Name	Milwaukee, WI	Switch Port	1	2	3	4
Port Mirroring	Disabled	Link	OFF	OFF	OFF	OFF
IGMP Snooping	Disabled	Speed	---	---	---	---
QoS	Disabled	Duplex	---	---	---	---
VLAN	Disabled					
MAC ID Management	Disabled	Switch Port	5	6	7	8
Product Type	9300-8EDM	Link	OFF	OFF	ON	OFF
Serial Number	S11212399	Speed	---	---	100	---
MAC Address	00:90:17:12:7F:EF	Duplex	---	---	Full	---
Firmware Revision	0.31w051221					
Web Revision	0.19w051221					

Gigabit Port Info

Gigabit Port	G
Fiber Optic Transceiver:	Not present
Link	OFF
Speed	---
Manufacturer Name:	N/A
Duplex	---
Model Number:	N/A

Resources

- [Visit www.ab.com for additional information](#)
- [Technical Reference Manual](#)
- [EGS File and ICD File](#)

Contacts

IP Settings for the remote device on the LAN site.

**Network Interface**

IP Address

Subnet Mask

Default Gateway